



WEB Tuna



Microsoft® SharePoint® *End User Performance Monitoring*

WebTuna allows you to monitor end-user performance as seen by your end-users for both websites and intranet applications such as Microsoft SharePoint.

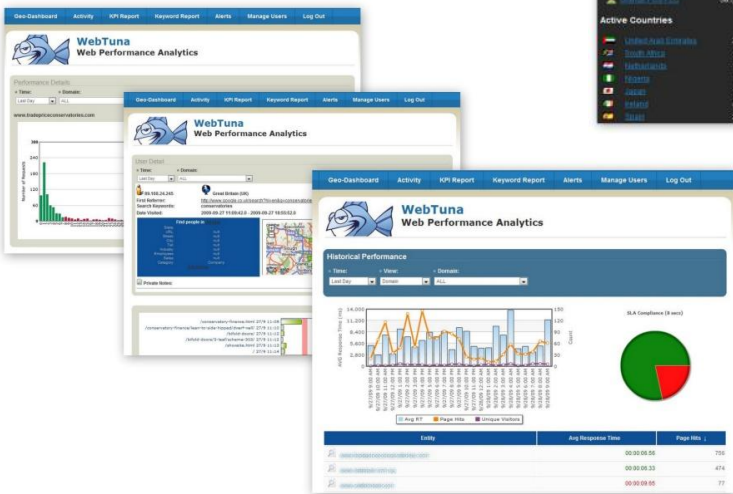
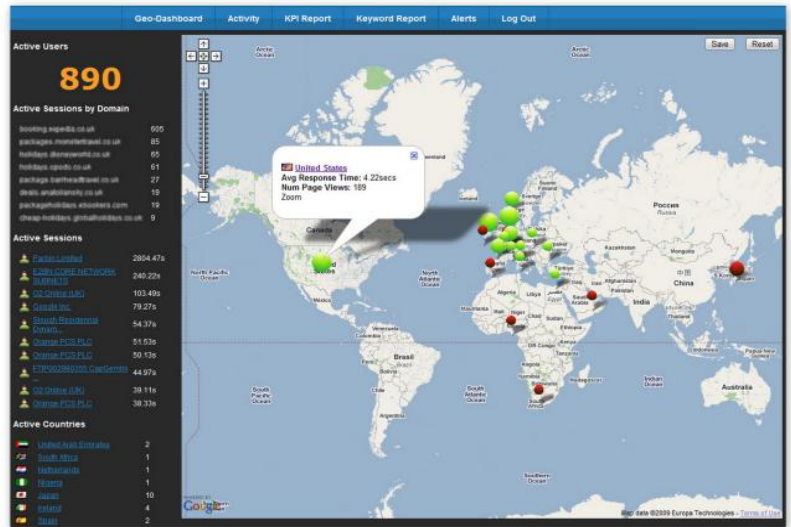
WebTuna lets you know exactly how each page is performing for each individual user and keeps a history so that you can track the quality of service you are delivering over time. You can even automatically measure performance against a set of pre-defined Service Level Agreements (SLA's).

WebTuna's Geo-Dashboard interface allows you to visualize on a single screen exactly what level of performance your users are seeing, and then drill down into response time by user, country, URL, page title, domain, referrer and more.

Key Benefits

- Simple installation
 - Fully hosted solution
 - Just a 4K JavaScript file to add to your site
- Measures **real** end user experience for **all** visitors to your site (not synthetic transactions)
- Real-Time views as well as historical reports

WebTuna's GeoDashboard allows real time visualization of how many users are on your sites and where they are coming from by overlaying them onto Google Maps. The size of bubble indicates number of users and the color indicates the user experience they receiving.



Other views in WebTuna allow you to view reports on end user experience over time and drill down into individual users and the pages they visited.

T : +44 (0)845 452 4129
 F : +44 (0)870 762 3164
 E : info@applicationperformance.com
 W : www.webtuna.com

